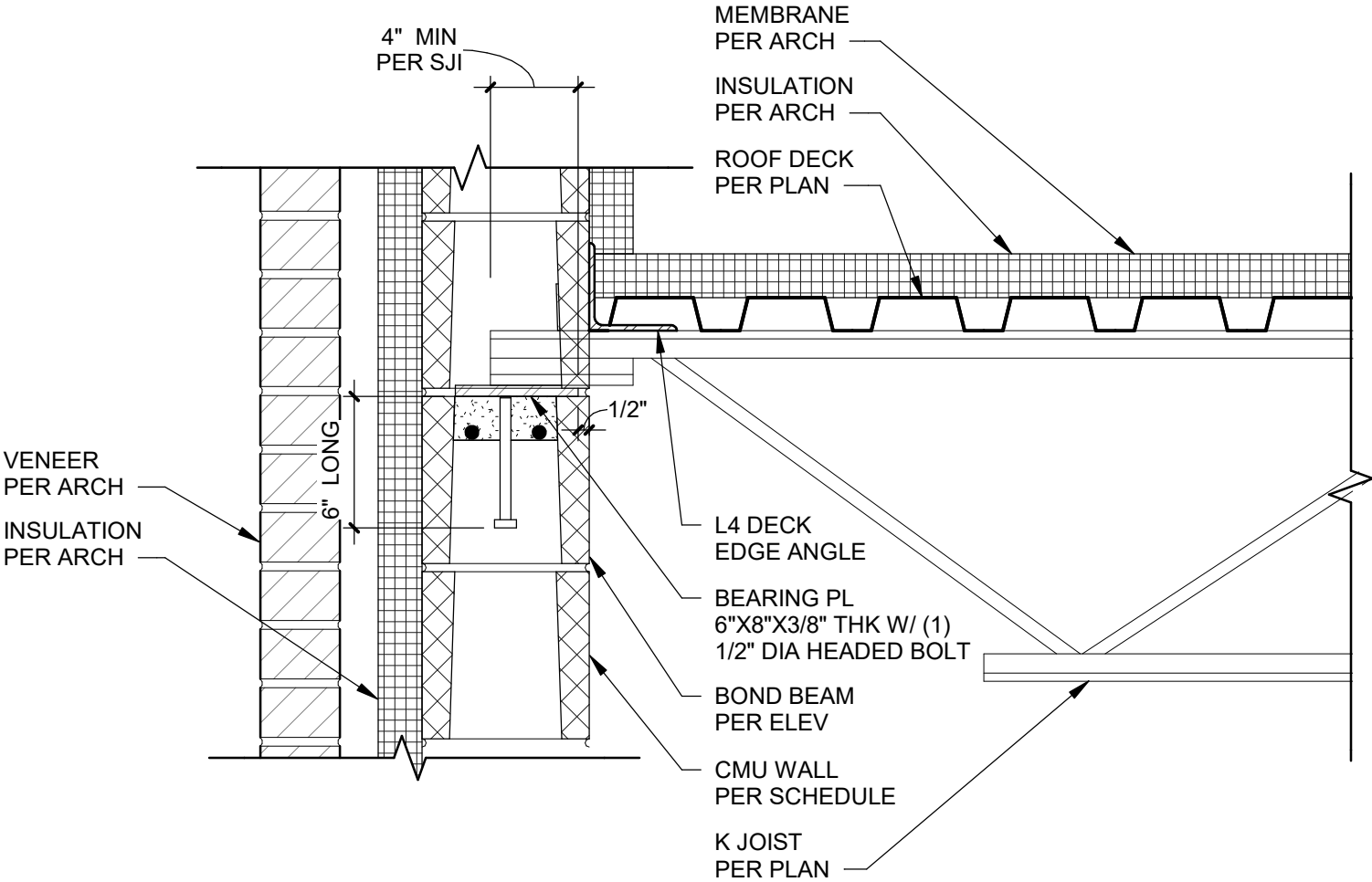


DISCLAIMER: The Block Design Collective ("BDC") does not make any representations or warranties with respect to the accuracy or suitability of this information, and persons making use of this information do so at their own risk. BDC disclaims liability for damages of any kind, including any special, indirect, or consequential damages, which may result from use of this information. This information is not to be interpreted as indicating compliance with, or waiver of, any applicable building code, ordinance, standard or law.

DESIGNER NOTES:

CODE REQUIREMENTS

1. ENGINEER CAN REQUEST LESS THAN 4" BEARING LENGTH, 4" MINIMUM IS SHOWN BASED ON SJI REQUIREMENTS.



2

TYPICAL JOIST BEARING

SCALE: 1 1/2" = 1'-0"